



Coordinator's Corner

A GIANT thank you for your prayers these past few months—we have been blessed with 19 nurses registered for our Fall 2011 course. YES!!

Please call/email Bev ASAP if you would be able to assist with breaks, lunch or clean-up. We could use the help.

Prayer support for this class is in 4 hour blocks. Please let Bev know if you are available to support this class with prayer.

The 25th Westberg was a major event for parish nurses as the announcement was made that the International Parish Nurse Resource Center had found a new home. Church Health out of Memphis, TN will now be the go to place for faith community nursing. The curriculum that we use will be processed through their organization as will the books, pins and other resources.

I can't believe I am writing this but our offices have moved AGAIN ☺! Bev and I are now located on North Clinic 5 West. You can still access us from the hospital and we hope you will notice how fast the new elevators are—we do! We will miss our daily bird's eye view of the construction from the 11th floor and seeing so many precious babies leaving to go home.

As fall colors continue to unfold, please prayerfully consider what programs you would offer this Advent season.

We look forward to seeing many of you November 6th for our annual retreat. Our

speaker—Joyce Hutchison—is a collaborator with Joyce Rupp and an author of several books. Please RSVP to Bev so we know how many to expect. Mary Lane LaMontagne (Winter 2010 class) and her church—Savoy United Methodist Church—will be our hosts this year.

Traditionally we time our Vial of Life renewals/update to the weekend we turn our clocks back. This year that day will be November 6th Please make sure to publicize in your bulletin/newsletter that you will be available to update VOL sheets for church

(Continued on page 2)

Inside this issue:

Prayer list	2
Class Help & Prayer	3
ECIAAA Award Goes to...Rose Gates	4
Reflections from Westberg	5
EDUCATIONAL RESOURCES	
Parish Nurse Education Series	6
Acton Conference	6
RVSP for Annual Retreat	7
Free First Aid & CPR Certification Courses	7
Spiritual Resiliency & Aging Overview/Workshop	8
Champaign Smart Money Seminar	9
RESOURCES	
National Health Observances	9
Study—children accidentally poisoned	10
Getting Attention: Please Come..You'll want to hear	11
Vermilion County Flu Vaccination Clinics	12
Downloadable Resources	13
IL Reportable Disease List	14-15

members. If you need help, call our office and we will see if we can offer support for you. Watch the News Gazette for the ad we run every year reminding people to update their records.

Prayers for our fellow parish nurses are always welcomed—please see the prayer list and hold these special intentions in your heart.

As I write this column, I am in a plane headed to Wichita to keynote their final (sniff-sniff) state parish nurse conference. I am fortunate to have spoken for this group twice before and look forward to a night in their lovely retreat center.

Following Kansas, I fly to Denver to speak for the rocky Mountain chapter of parish

nurses. How exciting! It is always fun to be with our colleagues from across the U.S. One of the faith community nurses in Colorado will be presenting on “Social Networking and the Church”. Looking forward to that!

Please make sure to RSVP for the October and November CE programs. Topics/presenters are listed inside this newsletter.

Can't wait to see you all at the retreat!

Blessings,

Faith



Prayer List—Please Pray for:

Parish nurse whose spouse is declining with Alzheimers

Parish nurse whose church is reeling from the sudden departure of their pastor

Prayers for continuance recovery Twila Holstein (Fall 2004)

Prayers for love and comfort Chrystal Overby (Winter 2007)

The husband and family of Melva Solon (Fall 1998)

Bruce and Phyllis Rogers

Larrienne Jordan



Class Help & Prayer needed for our Fall 2011 Parish Nurse Class

If you are interested in offering **prayer support or class help** for this class, please call Bev at (217) 326- 2583 or email beverly.talbott@carle.com with time/date you are available. **Class starts this week!**

Prayer Support Needed	
Date	Time
Friday, Oct 21	5:30 – 9:30 pm.
Saturday, Oct 22	8:00 am – 11:00 am
Saturday, Oct 22	11:00 am – 2:00 pm
Saturday, Oct 22	2:00 pm – 5:00 pm
Friday, Nov 4	5:30 – 9:30 pm.
Saturday, Nov 5	8:00 am – 11:00 am
Saturday, Nov 5	11:00 am – 2:00 pm
Saturday, Nov 5	2:00 pm – 5:00 pm
Friday, Nov 11	5:30 – 9:30 pm.
Saturday, Nov 12	8:00 am – 11:00 am
Saturday, Nov 12	11:00 am – 2:00 pm
Saturday, Nov 12	2:00 pm – 5:00 pm
Sunday, Nov 13	12:00 – 4:00 pm



Help Needed!



Class Help Needed	
Date	Time
Friday, Oct 21	7:00 p.m.
Saturday, Oct 22	12:00 p.m.
Saturday, Oct 22	1:40 p.m.
Saturday, Nov 5	11:50 a.m.
Saturday, Nov 5	3:10 p.m.
Saturday, Nov 12	11:50 noon
Saturday, Nov 12	3:00 p.m.
Sunday, Nov 13	3:00 p.m.

ECIAAA Award Goes to...Rose Gates

October 3, 2011, Bloomington, IL - The East Central Illinois Area Agency on Aging announced the recipients of Awards for outstanding leadership, advocacy and service on behalf of older persons and children in their communities, including our very own Rose Gates! (Fall 1998 class, Trinity Lutheran Danville)

Rose Gates of Danville, IL received the 2011 Volunteer of the Year Award in Honor of Jane Lohmann, for her outstanding volunteer services as Member of the ECIAAA Corporate Board and Advisory Council, Chairperson of the ECIAAA Advocacy Committee, and Coordinator of the Food for Children program in Danville, Illinois.

After a career in nursing and consulting in the health care field, Rose Gates shares her time and talents serving as a Master Gardner and volunteering with ECIAAA and the Food for the Children Program. Under her leadership, the ECIAAA Advocacy Committee successfully advocated for the reauthorization of the Older Americans Act in 2006. Rose also represented the Illinois 15th Congressional District as a member of the National Silver-Haired Congress.

As a parish nurse for her church, Rose organized the Food for the Children Program with support from Trinity Lutheran Church, Immanuel Lutheran Church, and Bethel Lutheran Church in Danville. For the past four years, the program has fed 377 children 5 days a week for ten weeks. Since 2010, the program has also filled weekend back-packs with food for 120 children. They are filling 75

backpacks beginning this school year. Rose Gates has also developed collaborative partnerships. Rose and her volunteers have conducted fund raisers to support Food for the Children. These fund-raising efforts have been generously matched by Thrivent Financial for Lutherans.

The ECIAAA presented these awards during the 39th Annual Meeting of the Corporate Board on September 21, 2011 at the East Central Illinois Older Americans Resources Facility named in honor of Phyllis H. Pinkerton, founder of the Area Agency on Aging and Executive Director from 1972 to 1996.



Rose Gates of Danville, IL received the 2011 Volunteer of the Year Award in Honor of Jane Lohmann, from the East Central Illinois Area Agency on Aging. Presenting the Award were Jerry Prideaux, Chairperson, ECIAAA Corporate Board (right) and Steve Arney, Chairperson-Elect (left).

Congratulations!

Reflections from Westberg

I would like to extend my deepest gratitude to you for making it possible for me to attend the Westberg Symposium this year. I had a grand time meeting Parish nurses from all over the world. I got to spend time Marcia Roberts and fellowship with her. I was especially amazed by the wealth of information available to us and the tremendous support we have by networking. I am grateful to Carle Foundation for allowing me this experience. I know that I will be using all the

information and knowledge I have gained to help the community I serve.

Beverly, thanks so much for your patience. May God continue to bless you all with good health so you can continue to serve. Thanks a Million.

Donnet Thomas BSN RN
Victory Worship Center
Winter 2010 class

An Awesome, uplifting, brilliant and total revitalizing weekend. It was great fun renewing friendships and getting to know our area Parish Nurses better and everyone there was already a friend, you never felt like you were around strangers.

The workshops were so full of information and made you want to do everything (they all made it seem so easy). There was so many dimensions of programs and offered all the skills and resources to achieve success. I have picked a couple to work on next year and can't wait to get started.

The food of course was scrumptious and way to much, we all did a lot of eating. We had plenty

of time to view the vendors and displays that had been set up and came home with a bag full of goodies.

I would encourage all to attend at some time and I can not Thank Carle enough for granting myself a scholarship. Because of change in sponsorship, next year it will be in Memphis. This is a chance of the life time experience.

Marcia Roberts RN, PN
First United Methodist Church, Rantoul
Winter 2010 class

I am so thankful I had an opportunity to attend the Westberg Conference. The scholarship I received in 2001 I was unable to use, because it followed the 9/11 tragedy by only a few days.

The conference was well organized and speakers were very knowledgeable and inspirational in their presentations. I have been a Parish Nurse since 2000, however took a respite for several years. I returned to parish nursing last year at St Matthews Lutheran Church in Urbana. This conference is exactly what I needed to be inspired to do more and has assisted me develop ideas for programs and events.

The history of parish nursing was presented through several speakers. It was amazing to be with other nurses who had traveled great distances to attend. Attending were all ages, levels of education, and religious orders, but all nurses with the same mission. Next year the conference will be in Memphis because IPNRC will move to Health Ministries in Memphis. I am already saving for the event.

Rita Vanier, RN, PN
St. Matthew Lutheran Church, Urbana
Fall 2000 Class

EDUCATIONAL RESOURCES

Parish Nurse Education Series

Advance Directives

October 29, 2011

Presented by Rev. Kathy Otto, M.Div. BCC,
Staff Chaplain at Carle

8:30-10:30 am

Pollard Auditorium at Carle

Adult Immunizations

November 19, 2011

Presented by Faith Roberts, RN, BSN, FCN,
Director Magnet/Parish Nursing/Children's
Services at Carle

8:30-10:00 am

Held in Parkview Conf Rooms

Follow signs to cafeteria on lower level
and as you go past vending machines,
keep going straight across dining area

**Free contact hours will be awarded
for these activities.**

Contact Bev Talbott to register at (217) 326
-2583 or beverly.talbott@carle.com

All are welcome but
registration is requested.

Acton Conference

Save the date for the Acton Conference:

Saturday, November 19

“Telephone Triage Basics: Assuring Quality and Reducing Risks”

8 a.m. – 5:15 p.m.

Pollard Auditorium, The Forum at Carle

Cost is \$20. Register by November 9 by contacting Susie Cole at (217) 383-3022
or foundation.education@carle.com.

Presented by the Russel D. Acton Professional Practice Series

RSVP for the Annual Retreat!

Joyce Hutchison will be the speaker for our Annual Parish Nurse Retreat on Sunday, November 6th. We hope you can attend and we look forward to seeing everyone again!

To RSVP call or email Bev—(217) 326-2583 or beverly.talbott@carle.com



Free First Aid & CPR Certification Courses in the Community

According to the American Heart Association, 80 percent of cardiac arrests occur at home and are witnessed by a family member. Cardiovascular diseases are the number one cause of death in the United States. Unintentional injuries are the fifth leading cause of death, just behind chronic diseases. CPR and First Aid training may save your life, or the life of someone you love.

The Center for Rural Health and Farm Safety at Carle is pleased to offer these free courses to the community.

Participants need only to attend one of the CPR courses to earn CPR certification or one of the first aid courses to earn certification in first aid.

Topics for CPR will include infant, child and adult choking and CPR as well as Automatic External Defibrillator (AED) use. The First Aid course will cover how to recognize and treat injuries, use appropriate equipment and supplies, and respond to various emergencies.

Courses will include hands-on instruction

and a workbook. For each class successfully completed, participants will receive a certification card.

Space is limited, and registration is required. Participants must be 14 years of age or older. For more information or to register, please go to carle.org/cpr, or call the Center for Rural Health and Farm Safety at (217) 383-4601.

To learn about other classes offered by the Center for Rural Health and Farm Safety, please visit www.carle.org/farmsafety.

Upcoming classes that have availability:

Mattoon – Oct. 18th and 21st

Arthur – October 24th

Rantoul – November 17th

Paxton – December 5th

Champaign – December 14th



Spiritual Resiliency and Aging: An Overview

Friday, October 28

8 am—9 am

Advocate BroMenn Medical Center Chapel

This free presentation will be led by the Rev. Dr. Janet Ramsey, who is the George Weiman Chair of Pastoral Theology and Ministry and Associate Professor of Congregational Care Leadership at Luther Seminary in St. Paul, Minnesota. A pastoral

counselor and nationally known speaker on religion and aging, Dr. Ramsey is co-author of the forthcoming book, “Spiritual Resiliency and Aging: Hope, Relationality and the Creative Self.”

For more information or to register, call 309.268.5499 by Friday, Oct. 21.

1 contact hours will be awarded upon successful completion of this program.

Spiritual Resiliency and Aging: An Interdisciplinary Workshop

Friday, October 28

9:15 am—3:15 pm

Advocate BroMenn Medical Center Chapel

The workshop will be led by the Rev. Dr. Janet Ramsey, who is the George Weiman Chair of Pastoral Theology and Ministry and Associate Professor of Congregational Care Leadership at Luther Seminary in St. Paul, Minnesota. A pastoral counselor and nationally known speaker on

religion and aging, Dr. Ramsey is co-author of the forthcoming book, “Spiritual Resiliency and Aging: Hope, Relationality and the Creative Self.”

The workshop, which includes a continental breakfast and lunch, is \$35 for the public, \$25 for BroMenn associates and \$10 for current students in an ACPE program.

4 contact hours will be awarded upon successful completion of this program.

Target Audience for these events: Nurses, mental health clinicians, chaplains and other caregivers of the aging.

Purpose: Increase understanding of the spiritual needs and resources of the aging and how caregivers can provide support.

Advocate Health Care is an approved provider of continuing nursing education by the Illinois Nurses Association, an accredited approver by the American Nurses Credentialing Center’s Commission on Accreditation.

Champaign Smart Money Seminar

Wednesday, October 19th

11:30 am—3:00 pm

**Parkland Community College
D-Building (D244)**

Featured Speaker: Dan Rutherford, Illinois State Treasurer

Focus: This seminar is designed to help you learn new skills and techniques to navigate today's economic landscape. It will include speakers on budgeting, credit, and great networking opportunities.

Schedule:

Check-In—11:30 a.m.

Conference—12:00 p.m. - 3:00 p.m.

Admission and refreshments are complimentary, however, registration is required.

TO REGISTER—Visit www.treasurer.il.gov or contact Gigi Callaway at 312-814-1793 | fax: 312-814-1231 or email financiald@treasurer.state.il.us

For general information contact Ben Noven at 312-814-1247

RESOURCES

National Health Observances

October

National Breast Cancer Awareness Month

National Breast Cancer Awareness Month
Board of Sponsors

C1C-315

1800 Concord Pike

Wilmington, DE 19850-5437

nbcamquestions@yahoo.com

www.nbcam.org

Materials available



Sudden Infant Death Syndrome Awareness Month

First Candle/SIDS Alliance

1314 Bedford Avenue, Suite 210

Baltimore, MD 21208

(800) 221-7437

www.firstcandle.org

Materials available



November

American Diabetes Month

American Diabetes Association

1701 North Beauregard Street

Alexandria, VA 22311

(800)DIABETES (342-2383)

www.diabetes.org

Materials available

Contact local chapters



November 17

Great American Smokeout

American Cancer Society

250 Williams Street NW

Atlanta, GA 30303

(800)ACS-2345 (227-2345)

[www.cancer.org/Healthy/StayAwayfromTobacco/](http://www.cancer.org/Healthy/StayAwayfromTobacco/GreatAmericanSmokeout/index)

[GreatAmericanSmokeout/index](http://www.cancer.org/Healthy/StayAwayfromTobacco/GreatAmericanSmokeout/index)

Materials available



Study finds an increase of children accidentally poisoned with pharmaceuticals

THE JOURNAL OF PEDIATRICS

Children's Hospital Medical Center, MLC-3021 3333
Burnet Ave.

Cincinnati, OH 45229-3039

513-636-7140 FAX: 513-636-7141

Embargoed until 12:00 AM, ET, September 16, 2011

For more information or to obtain a copy of the article, contact: Brigid Huey, 513-636-7140, journal.pediatrics@cchmc.org

Study Finds an Increase of Children Accidentally Poisoned with Pharmaceuticals Cincinnati, OH, September 16, 2011 -- Pharmaceutical poisoning remains a common childhood injury, despite years of concerted prevention efforts, such as improved safe guards on packaging. Over half a million children are exposed to pharmaceuticals each year. A new study soon to be published in The Journal of Pediatrics attempts to understand this growing problem to aid in the progress of reducing the number of childhood injuries due to pharmaceutical poisoning.

Dr. Randall Bond and colleagues from Cincinnati Children's Hospital Medical Center and the University of Cincinnati gathered information about 544,133 children 5 years of age and younger who had visited the emergency department (ED) because they may have been poisoned by medication. The data was gathered from all cases reported to the American Association of Poison Control Centers between 2001 and 2008. In an attempt to find a focus for continued poison prevention methods, the authors organized the data according to medication type and whether the exposure was caused by the child self-ingesting the medication or by a dosing error.

The study, reported in "The Growing Impact of Pediatric Pharmaceutical Poisoning" by G. Randall Bond, MD, Randall W. Woodward, and Mona Ho, MS, appears in The Journal of Pediatrics, DOI 10.1016/j.jpeds.2011.07.042, published by Elsevier.

"We need to know the medications and ingestion circumstances that contribute most to ED visits, hospitalization, and harm," Dr. Bond explains. The authors found that 95% of ED visits resulted from self-ingestion. Prescription drugs accounted for 55% of the ED visits, 76% of hospital admissions, and 71% of significant injuries. The biggest impact came from opioid-containing pain medications (eg, oxycodone, morphine, codeine), sedative hypnotics (eg, muscle relaxants, sleep aids), and cardiovascular medications. "The problem of pediatric poisoning in the U.S. is getting worse, not better," Dr. Bond asserts. Overall, there was a 22% increase in the exposure for this age group, although the number of children in the U.S. under the age of 5 years increased only 8% during the study period.

The authors attribute this increase to a greater availability of, and access to, medications in the child's home. They also note that effective "poison proofing" may have plateaued or declined in recent years. "Prevention efforts of parents and caregivers to store medicines in locked cabinets or up and away from children continue to be crucial. However, the largest potential benefit would come from packaging design changes that reduce the quantity a child could quickly and easily access in a self-ingestion episode, like flow restrictors on liquids and one-at-a-time tablet dispensing containers," Dr. Bond suggests. He goes on to recommend that such changes should be applied to both adult and pediatric products and to over-the-counter and prescription products.

Used with permission

Getting Attention: Please Come...You'll Want to Hear This

There's nothing worse for a program organizer to hear the day after an event than "Oh, I wish I had known about that" . . . or "I wish I could have come...that's what I needed to know."

Empty chairs at a program or event does not always mean disinterest. Sometimes it means the word didn't get out as well as it could have. But the good news is that filling those seats isn't rocket science — it's basically just understanding your audience and how they get their information.

The best way to find out how your audience gets their information is to ask them. Survey general or targeted groups (parents, senior citizens, youth) in your church or invite them to a focus group. Find out the top ways they prefer to receive information about upcoming events: email, websites, telephone trees, a note in the mail —and more importantly, what they don't prefer. You will still end up using a number of ways to communicate, but you won't be misdirecting your efforts. As you poll your groups, take advantage of the opportunity to get other valuable information: What program topics would be of interest? What day of the week/time of the day works best for a program or event? This type of surveying doesn't have to be complicated or even formal — the key is to be truly connected to the people you are trying to reach.

Strategic and common-sense scheduling also is critical to building your audience. After you've cleared the date on the church calendar, keep going. For example: If you're planning a program for parents in your faith community on childhood obesity, take a look at online academic calendars for the schools that serve your congregation. Make

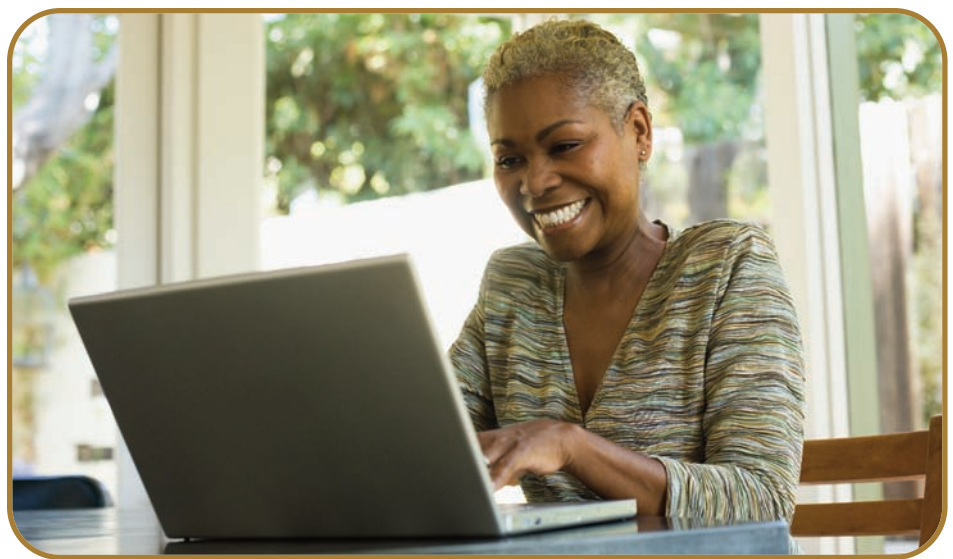
sure you're not competing against "Back to School Night" or the night before final exams. Similarly, check the website calendar of the local senior center before scheduling a program geared toward retirees.

Once the date has been set, go ahead and announce it and post it — even if it's many weeks away. "Save the date" is not just a concept for weddings and galas. Once busy families put a date on the calendar, half your work is done. Naturally, more information and reminders will follow, but the time has been inked in. If it's a bad date, you will hear about it quickly and far enough in advance to make rescheduling easier.

If the surveying discussed above leads you to a heavy reliance on electronic communication, your options are far-reaching. In our era of information technology, getting the word out is light years easier than before. Email groups (church, neighborhood, school), websites and online newsletters, social media (Facebook and Twitter, etc.) are common sources of information for families

in faith communities today, and everything available to the event organizer should be utilized. However, electronic communication is obviously not the entire solution for even the most technology-connected audience. Although the good news is that your email about the childhood obesity class has been instantaneously delivered to the recipient's email inbox, the bad news is that it sits among 35 other new emails that your recipient — a harried parent with a busy schedule — has no time to open and read anytime soon.

As a result, traditional forms of communication should never be abandoned: the poster on the church bulletin board, the notice in the church bulletin, the verbal announcement during services, classes and meetings. In addition, if the budget allows: get creative. Want to market a class on good nutrition? Hand out a sample of healthy muffins at a church event or offer a door prize to those who attend (a grocery gift card). ■



Used with permission



Vermilion County Adult Flu Vaccination Clinics

Dear Vermilion County Parish Nurse:

Please share the following information as appropriate with your congregation.

The Vermilion County Health Department will begin its Adult Seasonal Flu Clinics the last week in September.

The Center for Disease Control has recommended that flu vaccinations begin as soon as vaccine is available, and the Health Department is following that recommendation.

The Vermilion County Health Department will offer seasonal flu shots at 200 South College Street:

October 19 (Wed) 8:30 - 3:30

October 20 (Thur) 3:00 - 6:30

October 27 (Thur) 3:00 - 6:30

October 28 (Fri) 8:30-11:30

Additional public clinics will be scheduled as necessary.

The Center for Disease Control (CDC) recommends for the 2011-2012 flu season that **everyone 6 months and older** receive their annual flu shot. According to the CDC, immunity from the flu shot takes about two weeks to build and lasts up to 12 months. Because immunity does wane over time, the CDC recommends getting a flu shot annually.

The cost for adult flu shots, for those 18 years of age and older, at the Vermilion County Health Department will be \$30.00. The Health Department will bill Medicare, Medicaid and **all** Health Alliance plans. Individuals should be prepared to present proof of these types of coverage at the time of vaccination. The Health

Department cannot bill private insurers, but a receipt can be provided for use by those who may be covered by insurance and want to seek reimbursement.

Children ages 6 months to 18 years of age may schedule a flu shot through our Immunization Department by calling 431-2662 ext 249. The child's parent or guardian must accompany the child for the vaccination. The cost for vaccinations for children under the age of 18 will be \$15.00.

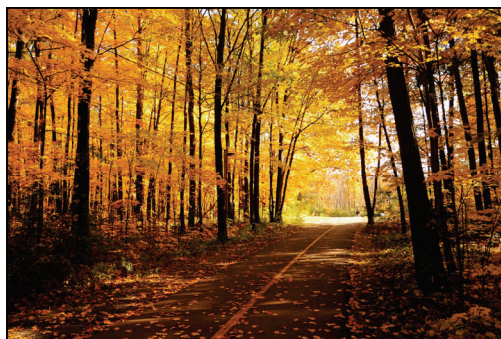
The Vermilion County Health Department encourages everyone to be proactive this flu season to protect themselves and their families by getting a flu shot, and then remembering the keys to preventing flu illness:

- Wash your hands with soap and hot water, and keep hand sanitizers nearby as a backup.
- Stay home if you are sick.
- Maintain your personal space (three to six feet) away from other people.
- Cough/sneeze into your elbow or use a tissue and properly dispose of it immediately, then wash your hands.
- Keep your hands away from your face -- especially your eyes, nose and mouth.
- Frequently sanitize hard surfaces, like countertops and door knobs.
- Teach your children to wash their hands properly.

For more information visit the Health Department website at www.vchd.org, or contact: Jenny Trimmell, (Director of Nursing) 431-2662 ext 229.

Downloadable Resources

HANDOUT's & POSTERS	SOURCE LOCATION
Handout: Don't take chances with your family's health – make sure you all get vaccinated against influenza every year!	www.immunize.org/catg.d/p4069.pdf
Cover Your Cough Poster	www.cdc.gov/flu/pdf/protect/cdc_cough.pdf
Cover Your Cough/Clean Your Hands Poster	www.health.state.mn.us/divs/idepc/dtopics/infectioncontrol/cover/gen/cycpgeneng.pdf
Illinois Dept of Public Health Handwashing Poster	www.idph.state.il.us/about/fdd/HandWash2.pdf
Pictures of hand washing	www.handhygiene.org/image_library.asp
Hand washing posters	www.washinghands.net/posters-signs-pictures.php
Hand washing posters (kids)	www.mass.gov/Eeohhs2/docs/dph/cdc/handwashing/poster_kids.pdf
Hand washing Brochure (trifold)	www.mass.gov/Eeohhs2/docs/dph/cdc/handwashing/brochure.pdf
Hand washing poster (adult)	www.mass.gov/Eeohhs2/docs/dph/cdc/handwashing/did_you_wash_your_hands.pdf
Hand washing lesson plans K-6 th grade	www.mass.gov/Eeohhs2/docs/dph/cdc/handwashing/lesson_plans_k6.pdf
Hand washing resources (multiple languages)	www.mass.gov/handwashing
Hand washing poster (kids)	www.carex.co.uk/activities-for-children/hand-washing-poster
FLU shot poster/No Excuses	www.cdc.gov/flu/pdf/freeresources/general/no-excuses-flu-vaccine.pdf



Illinois Reportable Diseases List

It is come to our attention recently that parish nurses may not be aware of which diseases are reportable in the State of Illinois. It is possible that parish nurses may see or be aware of cases of reportable diseases within their congregation that have not been reported by a physician or hospital. (In instances where a disease is mild the person may have not sought medical care). As most churches have youth activities as well as those churches that have full-time day care centers as part of their makeup, the potential for a reportable disease occurring is very likely.

It is better to err on the side of reporting the disease to the Health Department and the Health Department getting the information twice than not having the illness reported at all.

I have attached a *generic* Reportable Diseases List (from the Illinois Dept. of Public Health). The bottom contact information is blank so it can be filled out to identify the information specific to whichever Health Department covers a particular county

For Vermilion County, please use this specific contact information for the Vermilion County Health Department:

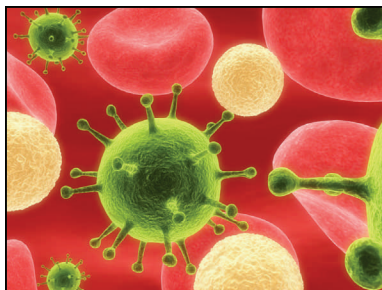
During regular business hours, call:
431-2662, ext 249

For emergencies after business hours, call:
431-2662, listen to message on who to call

Thanks!!
Jenny

Jenny Trimmell RN BSN
Director of Community Health Services
Vermilion Co. Health Dept.
200 S. College, Danville, IL 61832
217-431-2662 ext. 229
Fax 217-431-7483

New email address: jtrimmell@vchd.org
(please note address now has 2 "L's" in spelling of my last name)





Illinois Reportable Diseases

Mandated reporters, such as health care providers, hospitals and laboratories, must report any suspected or confirmed human cases of these diseases to the local health authority within the number of days or hours indicated in parentheses. (*HIV/AIDS is reportable directly to IDPH)

Any suspected bioterrorist threat (immediately)	Hemolytic uremic syndrome, post diarrheal (24h)	Rubella (24h)
Any unusual case or cluster of cases that may indicate a public health hazard (immediately)	Hepatitis A (24h), B (7d), C (7d), D (7d)	Salmonellosis, other than typhoid (7d)
AIDS* (7d)	Histoplasmosis (7d)	Severe Acute Respiratory Syndrome (SARS) (immediately)
Anthrax (immediately)	HIV infection* (7d)	Shigellosis (7d)
Arboviruses (including WNV) (7 d)	Influenza, deaths in <18 yr olds (7d)	Smallpox (immediately)
Botulism, foodborne (immediately)	Influenza A, novel virus (immediately)	Smallpox vaccination, complications of (24h)
Botulism, infant, wound, other (24h)	Legionellosis (7d)	<i>S. aureus</i> , Methicillin resistant (MRSA) clusters in a community setting or colonization/ infection in infants <61 days (24h)
Brucellosis (7d, unless bioterrorism suspected, then immediately)	Leprosy (7d)	<i>S. aureus</i> infections with intermediate or high level resistance to vancomycin (24h)
Chancroid (7d)	Leptospirosis (7d)	Streptococcal infections, Group A, invasive and sequelae to Group A streptococcal infections (24h)
Chickenpox (24h)	Listeriosis (7d)	<i>S. pneumoniae</i> , invasive in those <5 yrs (7d)
Chlamydia (7d)	Lyme disease (7d)	Syphilis (7d)
Cholera (24h)	Malaria (7d)	Tetanus (7d)
Creutzfeldt-Jakob Disease (7d)	Measles (24h)	Toxic shock syndrome due to <i>S. aureus</i> (7d)
Cryptosporidiosis (7d)	Mumps (24h)	Trichinosis (7d)
Cyclosporiasis (7d)	<i>N. meningitidis</i> , invasive (24h)	Tuberculosis (7d)
Diphtheria (24h)	Ophthalmia neonatorum (gonococcal) (7d)	Tularemia (7d unless bioterrorism suspected then immediately)
Ehrlichiosis and Anaplasmosis (7d)	Pertussis or whooping cough (24h)	Typhoid fever (24h)
Enteric <i>E. coli</i> infections (STEC, O157:H7, ETEC, EPEC, EIEC) (24h)	Plague (immediately)	Typhus (24h)
Foodborne or waterborne illness (24h)	Poliomyelitis (24h)	Vibriosis (non cholera) (7d)
Giardiasis (7d)	Psittacosis (7d)	Yersiniosis (7d)
Gonorrhea (7d)	Q fever (7d unless bioterrorism suspected then immediately)	
<i>Haemophilus influenzae</i> , invasive (24h)	Rabies, human and potential human exposure (24h)	
Hantavirus pulmonary syndrome (24h)	Reye syndrome (7d)	
	Rocky Mountain spotted fever (7d)	

All reports are confidential and should include—

- the disease or condition being reported
- physician's name, address and telephone number
- patient's name, date of birth, age, sex, race/ethnicity, address and telephone number

TO REPORT A CASE

contact your local health department:

During regular business hours, call _____ - _____ - _____.

For emergencies after business hours, call _____ - _____ - _____.

If no local health department is available, contact the

Illinois Department of Public Health

217-785-7165 • TTY (hearing impaired use only) 800-547-0466

Thank you for your cooperation!



Community Parish Nurse Program
611 West Park Street
Urbana, IL 61801

